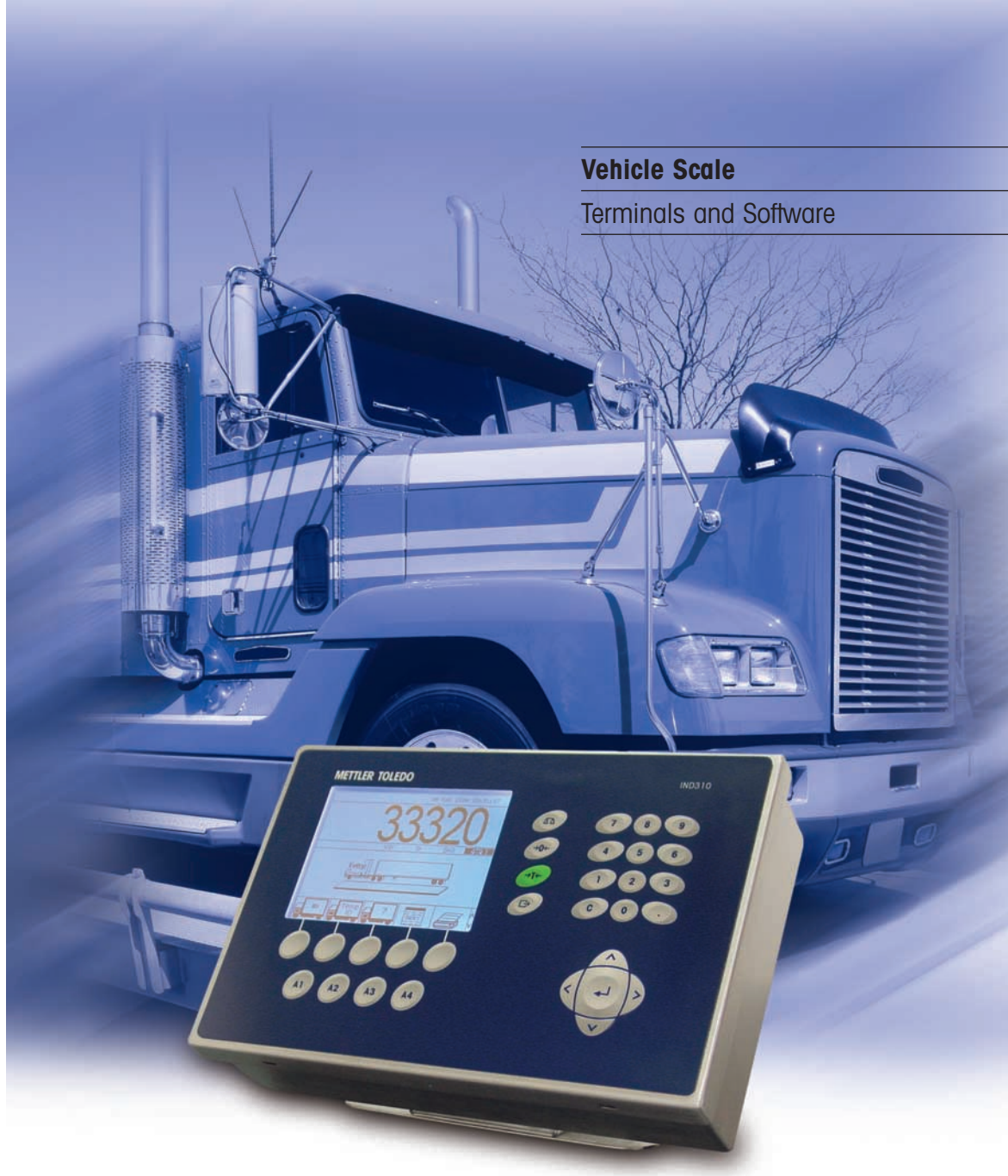


Indicators



Vehicle Scale

Terminals and Software



Expand the Capabilities of Your Vehicle Scale

PRELIMINARY

METTLER TOLEDO

Fast and Accurate Handling of Vehicle Weighing Transactions

METTLER TOLEDO offers vehicle scale control solutions that do more than just display weights. They let you use those weights to process transactions for a broad range of vehicle weighing applications. By combining advanced capabilities with simple operation, our products enable you to do more with your scale and get it done faster.

Expanding the capabilities of your vehicle scale can help your business run more efficiently. Whether your operation's requirements are simple or complex, we offer a product that will be a perfect fit. Our new IND310^{drive} terminal, the JAGXTREME[®] terminal with VSX software, and OverDrive[™] software provide a complete range of options, allowing you to select the right system for your application:

- A system that processes weighing transactions quickly and accurately, adding to your bottom line by enabling your scale to handle more traffic.
- A system that fits seamlessly into your existing operation, simplifying installation.
- A system that is flexible enough to match the processing and data management needs of your operation.

IND310^{drive} Terminal



The IND310^{drive} terminal is designed to provide a flexible system for processing inbound/outbound weighing transactions. In addition to Vehicle ID and transaction tables, it includes four configurable database tables for storing user-defined information. You can accumulate weights by Vehicle ID or by fields within any of the user-defined tables. Search capabilities speed up transactions by locating data quickly. Outbound mode provides two variable fields for adding remarks, such as qualitative statements or fully variable ones (for example, moisture content or dockage amount).

An interactive, graphic display makes the terminal easy to operate for anyone familiar with personal computers. You can connect a QWERTY keyboard to the terminal to simplify navigation and data entry. Information is organized on intuitive screens that help the operator set up data tables, retrieve data quickly for transactions, and configure system functions. The display is also used for customizing reports and tickets.

One terminal can control two vehicle scales, allowing inbound and outbound weighing on separate scales. Because the IND310^{drive} is compatible with both analog and digital load cell technologies, it gives you plenty of options. If you have one analog scale and one digital scale, you can control both with a single terminal and shared database. Or you can upgrade scales from analog to digital without replacing the terminal.

JAGXTREME Terminal with VSX Software



As with the IND310^{drive}, the JAGXTREME terminal with VSX software provides basic processing of inbound/outbound weighing transactions. Its built-in database includes tables for Vehicle ID, Badge ID, transactions, and commodities. One of the strengths of the JAGXTREME terminal is its control and communication capabilities. The terminal can be seamlessly integrated with your PLC and other process control systems, making it ideal for applications that use set points, such as filling/emptying vehicles on a scale. In addition to operating up to four vehicle

scales (analog or digital), the terminal can control peripheral devices such as traffic lights and gates. It offers open connectivity to all METTLER TOLEDO technologies and to leading industry technologies. An embedded web server allows remote setup, diagnostics, and maintenance.

OverDrive Software

OverDrive software is a powerful new way to get the most out of your vehicle scale. It saves time and money by putting complete control of weight and data management at your fingertips. Designed for compatibility with other systems, OverDrive software can fit seamlessly into your operation.

The software's extensive data management capabilities include a long list of standard database tables for

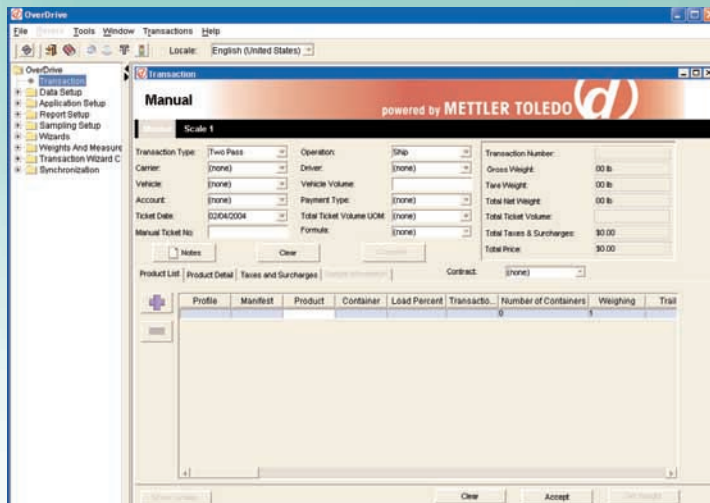
storing information about vehicles, products, accounts, pricing, etc. Plus, it includes 25 additional tables for storing user-defined information. Search functions, presets, and groups speed up transactions by simplifying the operator's job. You get instant access to the information you need to track orders, compile reports, and comply with regulations. The program provides dozens of standard reports and tickets, plus the ability to customize new ones to meet your needs.

OverDrive software makes it easy to connect your scale to the equipment that your business uses. Whether installed on a single PC or a computer network, the software can control up to six scales, plus traffic lights, gates, and other peripheral devices. You can process transactions from a scale house PC, an unattended weighing station, or a remote PC via web browser. Data can be

imported/exported for use with accounting software and other programs. OverDrive software is designed as a modular system with a variety of add-ons that enable it to grow with your business.

Your Source for Vehicle Scales

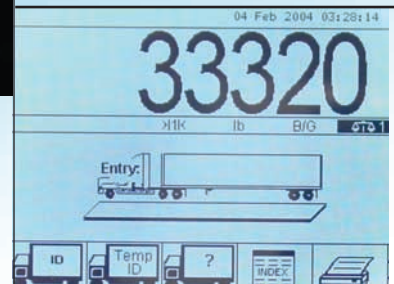
METTLER TOLEDO supplies complete vehicle scale systems. We can work with you to evaluate your operation's needs and help you select the right control solution for your vehicle scale. For more information, contact your local METTLER TOLEDO representative.



OverDrive Software: A series of configurable PC screens are used for processing transactions and working with the database.



JAGXTREME Terminal: A two-line display shows weights and provides prompts and options for setup.



IND310^{drive} Terminal: An interactive, graphic display makes setup and weighing transactions easy for operators familiar with PCs.

Type of Transaction	IND310 _{drive}	JAG/VSX	OverDrive
One-Pass Weighing with Stored Tare Weight	Yes	Yes	Yes
Two-Pass Inbound/Outbound Weighing	Yes	Yes	Yes
Transient Vehicle Weighing	Yes	Yes	Yes
Weighing with Commodity	Yes	Yes	Yes
Weighing with Accumulation	Yes	Yes	Yes
Net Weighing	Yes	Yes	Yes
Weighing while Filling/Emptying Truck		Yes	Yes
Unattended Weighing		Yes	Yes
Multi-Pass Weighing			Yes
Split Weighing			Yes
Multi-Axle Weighing			Yes
Zero Weighing (Controls Access to Facility)			Yes

Data Management	IND310 _{drive}	JAG/VSX	OverDrive
Transaction Table	Yes	Yes	Yes
Transaction Maintenance Table			Yes
Standard Database Tables	7	6	22
User-Defined Tables	4	0	25
Relational Database Structure	Yes		Yes
Weights & Measures Table (Alibi Memory)	Yes		Yes
Standard Reports and Tickets	Yes	Yes	Yes
Customizable Reports and Tickets	Yes		Yes
Search Functions	Yes		Yes
Presets and Groups (Index Table)	Yes		Yes
Data Import and Export	Yes		Yes

Produced in a facility that is

